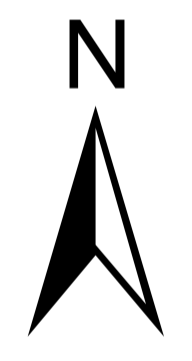



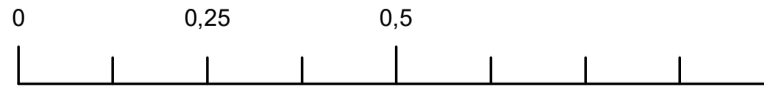


Nominated World Heritage Site
The Great Spas of Europe
Map 1 - Property and Buffer Zone

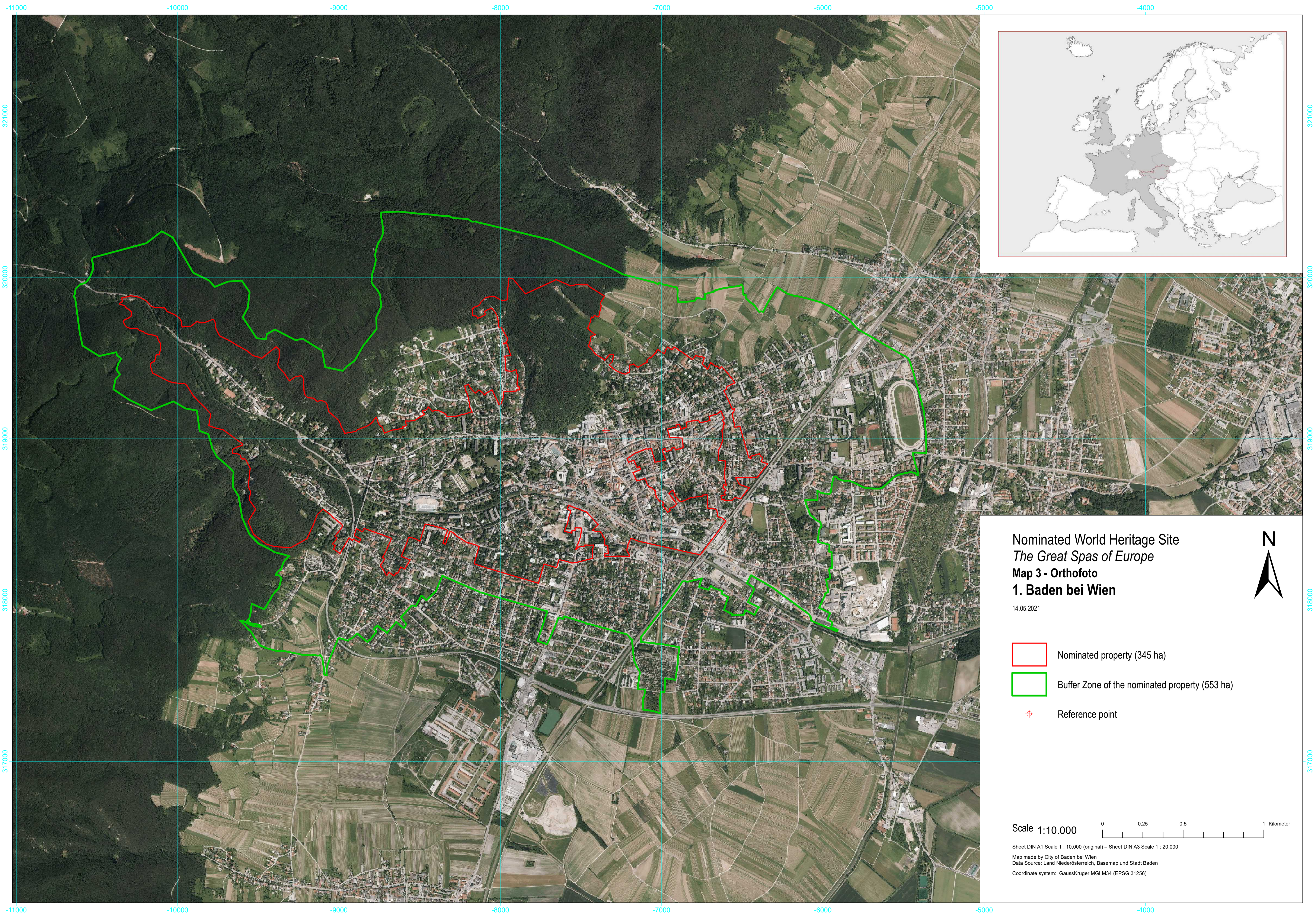
1. Baden bei Wien
14.05.2021



-  Reference point
-  Nominated Property (345 ha)
-  Buffer Zone of the nominated property (553 ha)


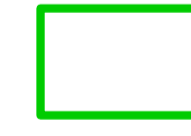

Scale 1:10.000 

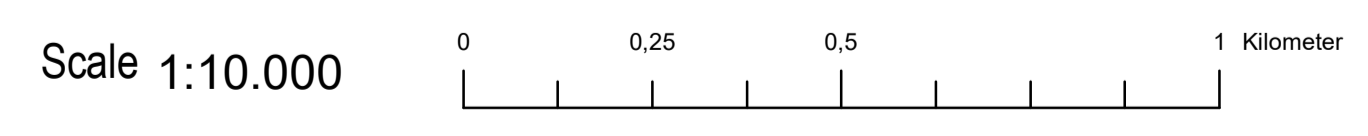
Sheet DIN A1 Scale 1 : 10,000 (original) – Sheet DIN A3 Scale 1 : 20,000
Map made by City of Baden bei Wien
Data Source: Land Niederösterreich, Basemap und Stadt Baden
Coordinate system: GaussKrüger MGI M34 (EPSG 31256)



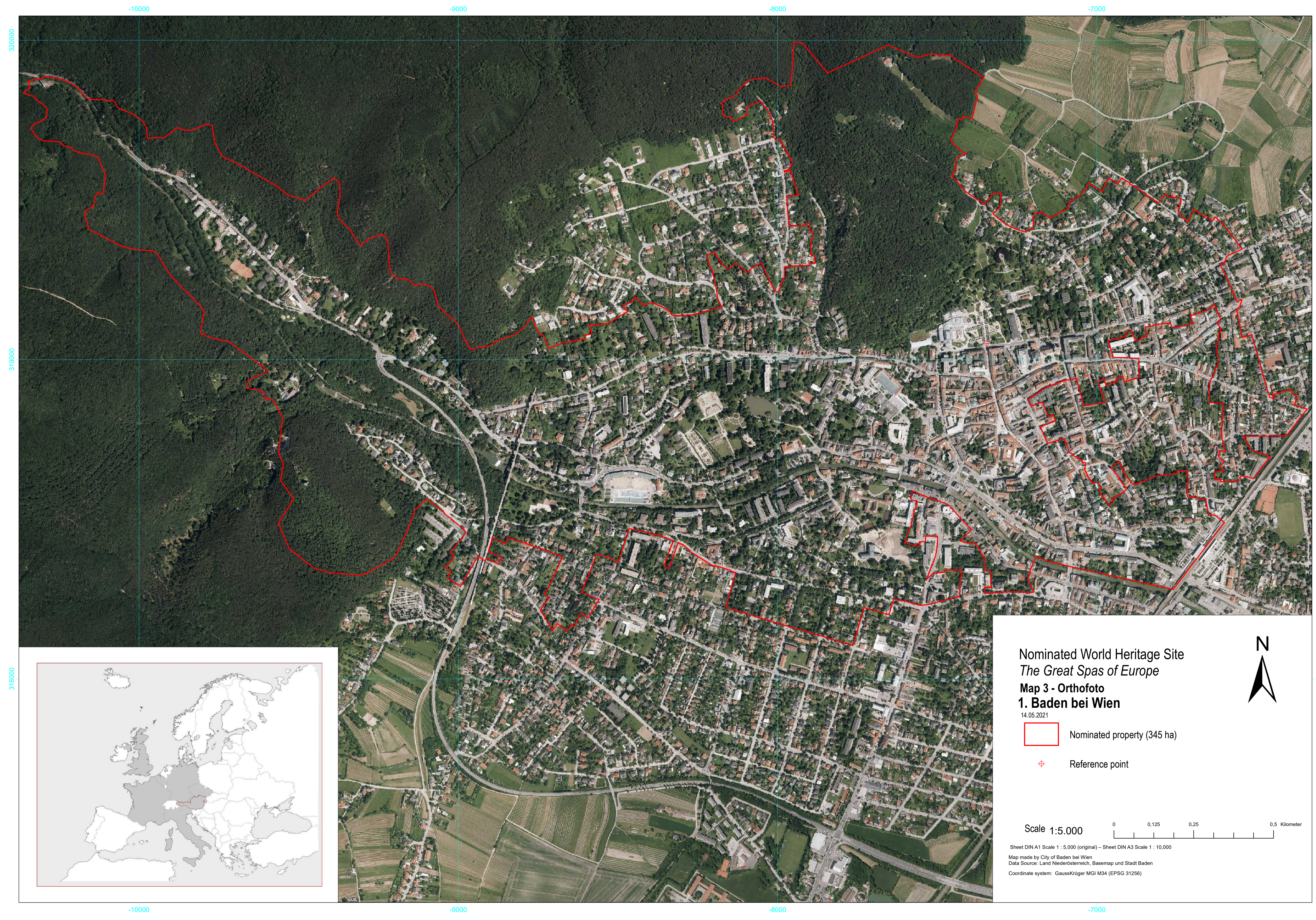
Nominated World Heritage Site
The Great Spas of Europe
Map 3 - Orthofoto
1. Baden bei Wien

14.05.2021

-  Nominated property (345 ha)
-  Buffer Zone of the nominated property (553 ha)
-  Reference point





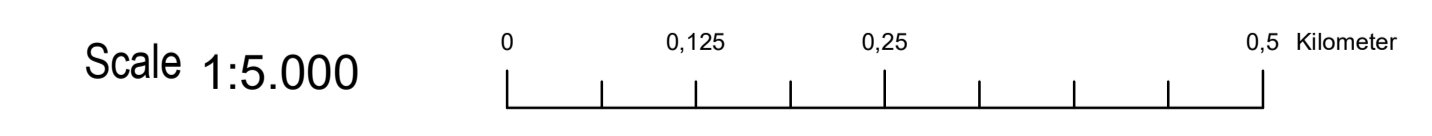
Sheet DIN A1 Scale 1 : 10,000 (original) – Sheet DIN A3 Scale 1 : 20,000
Map made by City of Baden bei Wien
Data Source: Land Niederösterreich, Basemap und Stadt Baden
Coordinate system: GaussKrüger MGI M34 (EPSG 31256)



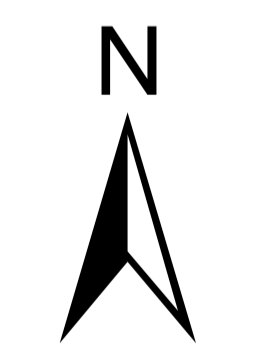
Nominated World Heritage Site
The Great Spas of Europe
Map 3 - Orthofoto
1. Baden bei Wien

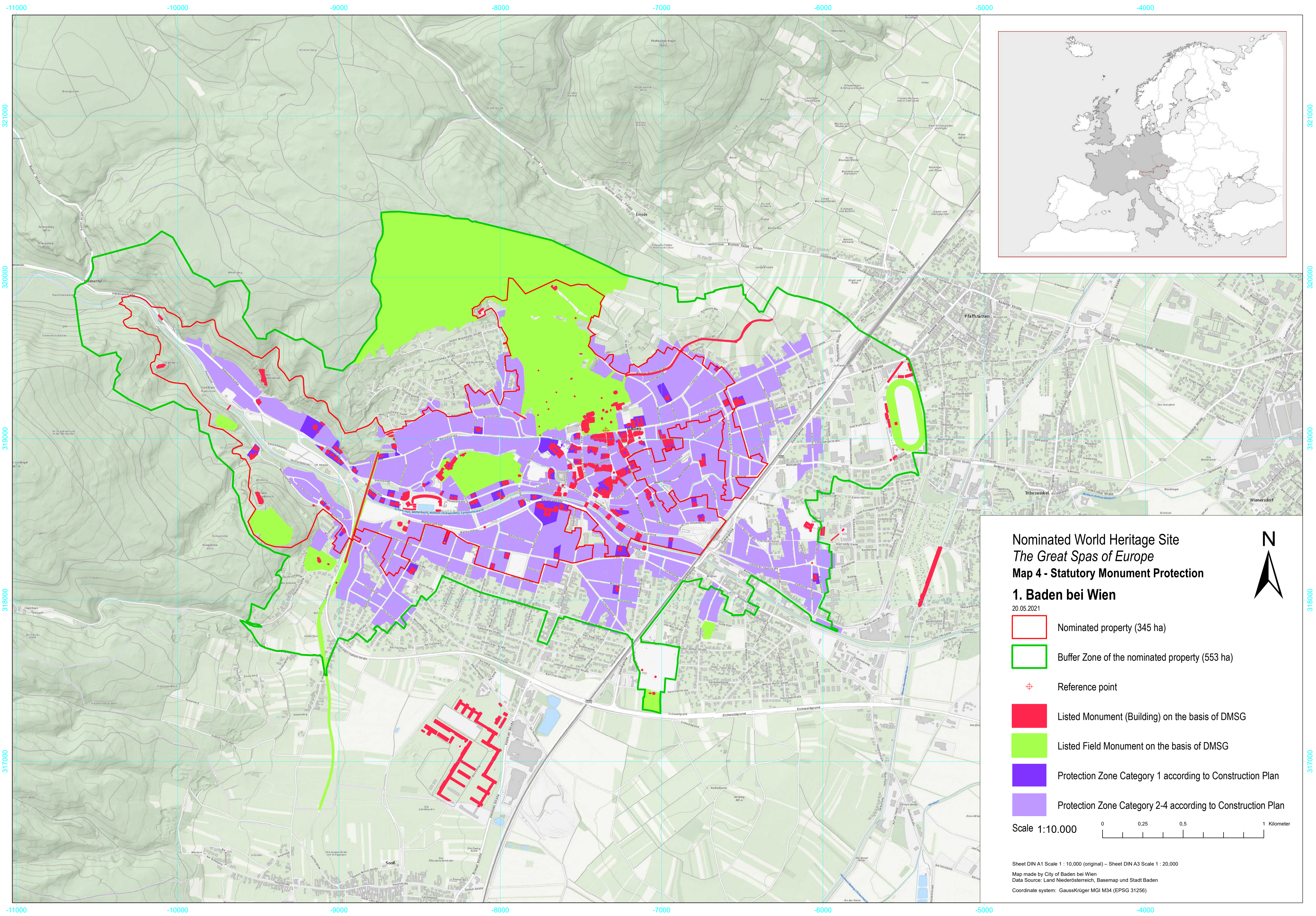
14.05.2021

-  Nominated property (345 ha)
-  Reference point



Sheet DIN A1 Scale 1 : 5,000 (original) – Sheet DIN A3 Scale 1 : 10,000
Map made by City of Baden bei Wien
Data Source: Land Niederösterreich, Basemap und Stadt Baden
Coordinate system: GaussKrüger MGI M34 (EPSG 31256)



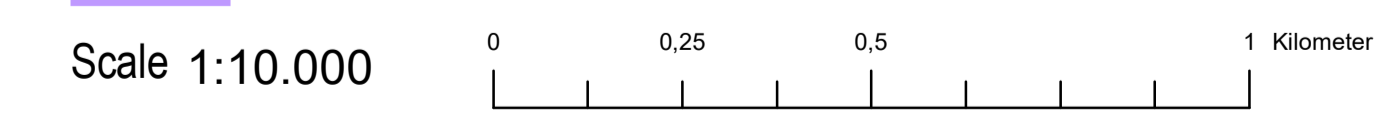


Nominated World Heritage Site
The Great Spas of Europe
Map 4 - Statutory Monument Protection

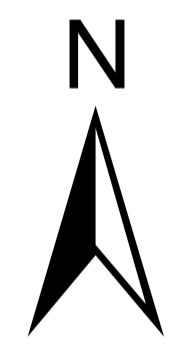
1. Baden bei Wien

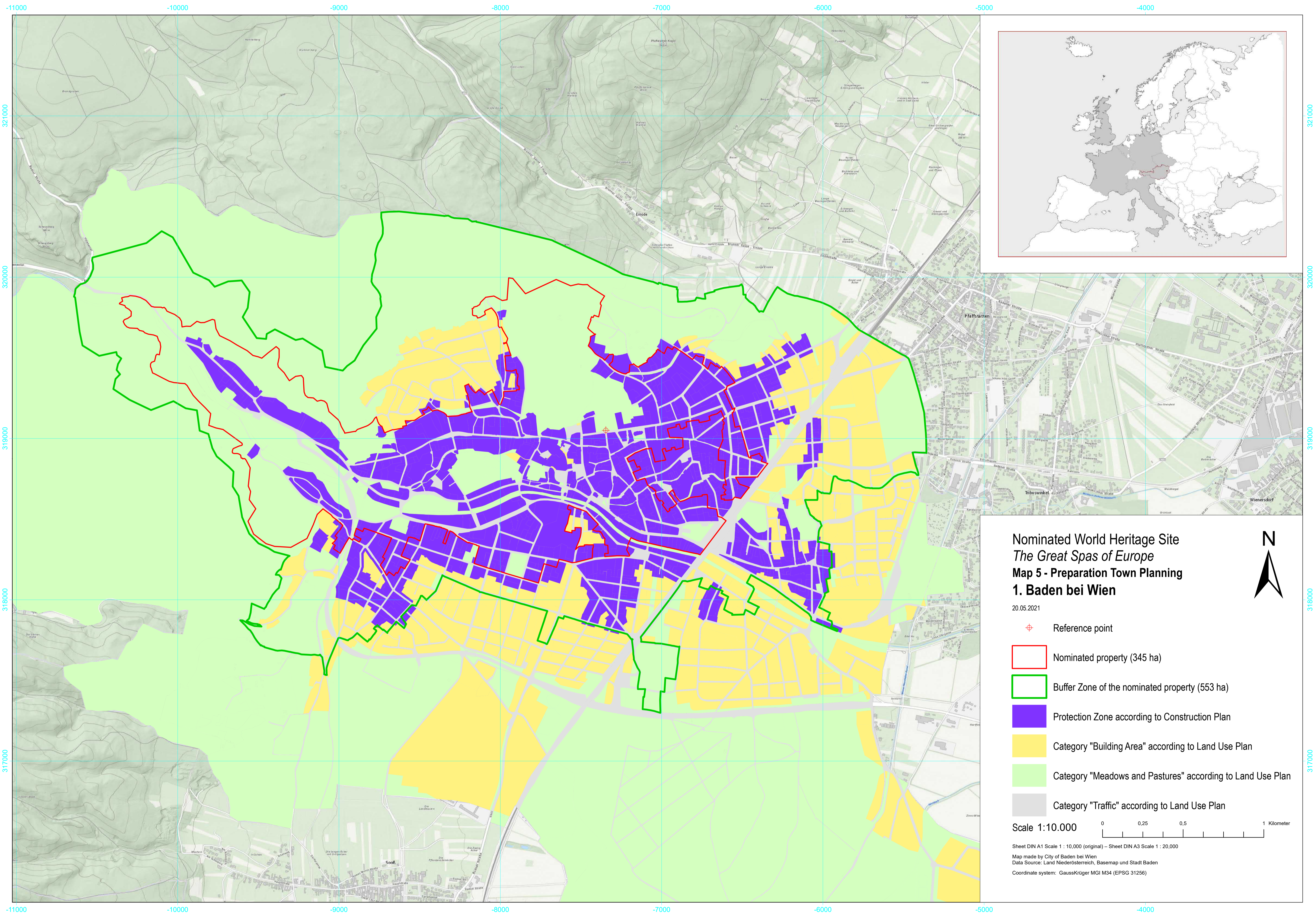
20.05.2021

- Nominated property (345 ha)
- Buffer Zone of the nominated property (553 ha)
- + Reference point
- Listed Monument (Building) on the basis of DMSG
- Listed Field Monument on the basis of DMSG
- Protection Zone Category 1 according to Construction Plan
- Protection Zone Category 2-4 according to Construction Plan








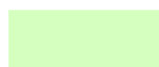

Sheet DIN A1 Scale 1 : 10,000 (original) – Sheet DIN A3 Scale 1 : 20,000
 Map made by City of Baden bei Wien
 Data Source: Land Niederösterreich, Basemap und Stadt Baden
 Coordinate system: GaussKrüger MGI M34 (EPSG 31256)

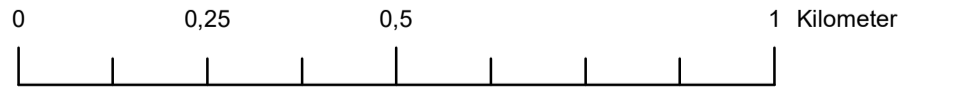




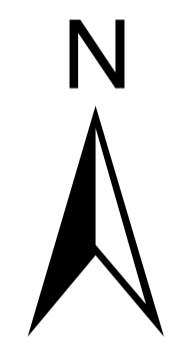
Nominated World Heritage Site
The Great Spas of Europe
Map 5 - Preparation Town Planning
1. Baden bei Wien

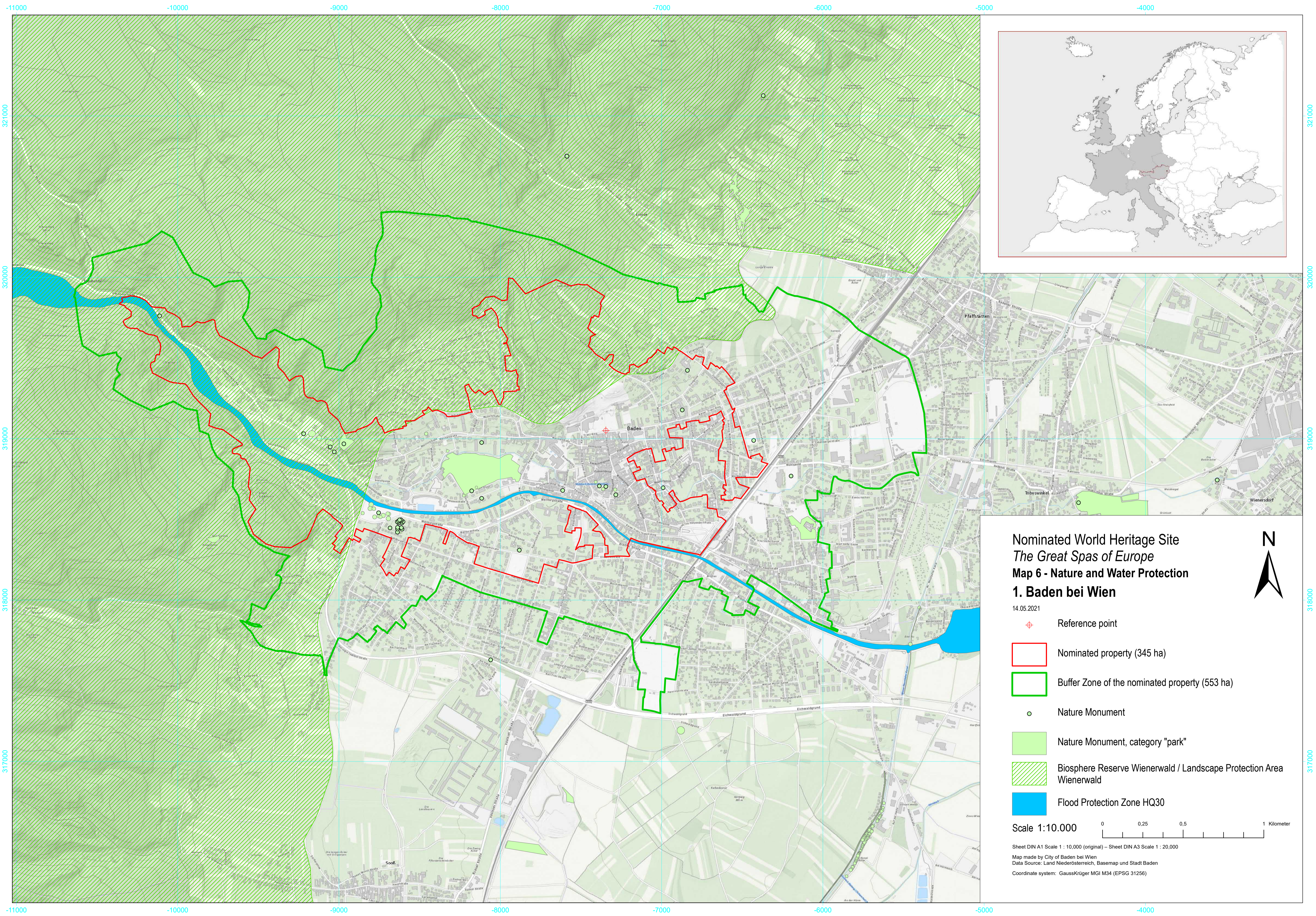
20.05.2021

-  Reference point
-  Nominated property (345 ha)
-  Buffer Zone of the nominated property (553 ha)
-  Protection Zone according to Construction Plan
-  Category "Building Area" according to Land Use Plan
-  Category "Meadows and Pastures" according to Land Use Plan
-  Category "Traffic" according to Land Use Plan

Scale 1:10.000 





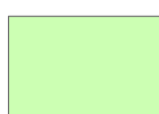
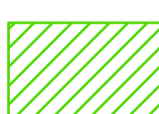

Sheet DIN A1 Scale 1 : 10,000 (original) – Sheet DIN A3 Scale 1 : 20,000
 Map made by City of Baden bei Wien
 Data Source: Land Niederösterreich, Basemap und Stadt Baden
 Coordinate system: GaussKrüger MGI M34 (EPSG 31256)

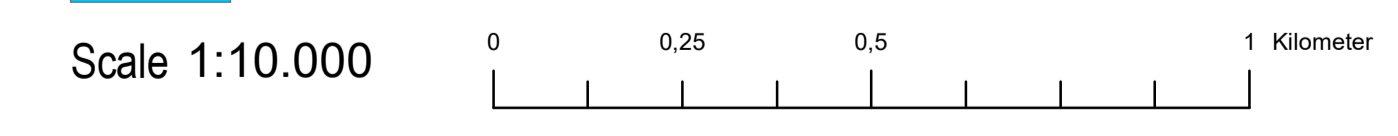




Nominated World Heritage Site
The Great Spas of Europe
Map 6 - Nature and Water Protection
1. Baden bei Wien

14.05.2021

-  Reference point
-  Nominated property (345 ha)
-  Buffer Zone of the nominated property (553 ha)
-  Nature Monument
-  Nature Monument, category "park"
-  Biosphere Reserve Wienerwald / Landscape Protection Area Wienerwald
-  Flood Protection Zone HQ30



Sheet DIN A1 Scale 1 : 10,000 (original) – Sheet DIN A3 Scale 1 : 20,000
 Map made by City of Baden bei Wien
 Data Source: Land Niederösterreich, Basemap und Stadt Baden
 Coordinate system: GaussKrüger MGI M34 (EPSG 31256)

